

# PVC STOCK CONTINUATIVO FELTRO FLOOR COVERING

PARAMENTRI TECNICI	STANDARD DI RIFERIMENTO	PVC FELTRO
<b>DESCRIZIONE</b>		
Spessore totale	EN ISO 24346	2 mm
Peso totale	EN ISO 23997	1450 g/m <sup>2</sup>
Strato di usura	EN ISO 24340	0,15 mm
Altezza rotoli	EN ISO 24341	2 m
Lunghezza rotoli	EN ISO 24341	35 mtl
<b>PERFORMANCE</b>		
Fondo	-	TX3005
Stabilità dimensionale	EN ISO 23999	max: ≤ % 0,25
Classificazione al fuoco	EN 13501-1	Bfl-S1
Coefficiente di frizionamento	EN 13893	DS
Flessibilità	EN ISO 24344	no crack



legno 301



legno 302



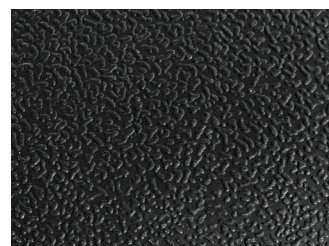
legno 303



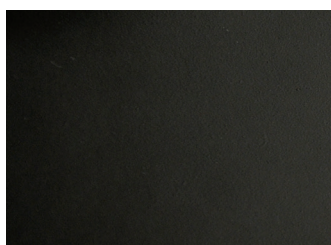
legno 304



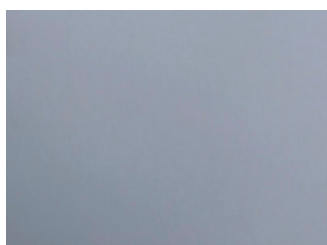
legno 305



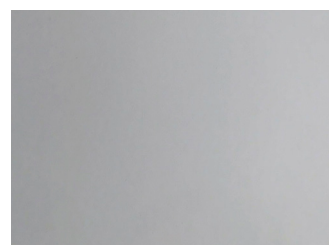
asfalto nero



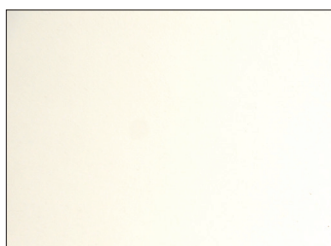
nero opaco



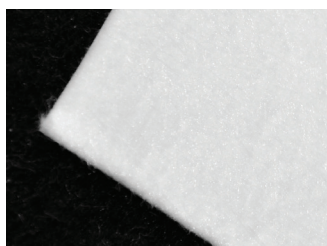
grigio scuro opaco



grigio chiaro opaco



bianco opaco



retro feltro