

# NATURAL&UNNATURAL

	MARTINICA	GIAMAICA	BARBADOS
composizione - composition composición - composition	100% PP stain-safe	100% seagrass	100% seagrass
Peso superficie - pile weight peso fibra - poids fibre	1.100 g/m <sup>2</sup>	1.800 g/m <sup>2</sup>	2.000 g/m <sup>2</sup>
peso totale - total weight peso total - poids total	1.640 g/m <sup>2</sup>	2.200 g/m <sup>2</sup>	2.400 g/m <sup>2</sup>
spessore totale - total height espor total - epaisseur total	5 mm	7 mm	10 mm
numero di punti al m <sup>2</sup> number of stitches/m <sup>2</sup> número de puntos/m <sup>2</sup> ombre de points/m <sup>2</sup>	70.400	-	-
fondo - backing soporte - dossier	lattice - latex - látex - latex	lattice naturale - natural latex látex natural - latex naturel	lattice naturale - natural latex látex natural - latex naturel
resistenza alla luce - colour fastness resistencia a la luz - solidité à la lumière	5-6	3 ----> 6-7	3 ----> 6-7
resistenza all'acqua - water fastness resistencia al agua - solidité à l'eau	4	3 ----> 4,5	3 ----> 4,5
altezza pezze - width - ancho - largeur	200/400 cm	200/400 cm	200/400 cm
classificazione al fuoco resistance against fire clasificación al fuego classement feu	-	Bfl-s1	Bfl-s1



	TOBAGO	SOHO	CAYMAN
composizione - composition composición - composition	100% seagrass	100% PA SD	100% sisal
Peso superficie - pile weight peso fibra - poids fibre	2.250 g/m <sup>2</sup>	500 g/m <sup>2</sup>	1.750 g/m <sup>2</sup>
peso totale - total weight peso total - poids total	2.450 g/m <sup>2</sup>	2.095 g/m <sup>2</sup>	2.150 g/m <sup>2</sup>
spessore totale - total height espor total - epaisseur total	8 mm	5,1 mm	6 mm
numero di punti al m <sup>2</sup> number of stitches/m <sup>2</sup> número de puntos/m <sup>2</sup> ombre de points/m <sup>2</sup>	70.400	200.000	-
fondo - backing soporte - dossier	lattice - latex - látex - latex	action backing	lattice naturale - natural latex látex natural - latex naturel
resistenza alla luce - colour fastness resistencia a la luz - solidité à la lumière	3 ----> 6-7	> 7	3 ----> 6-7
resistenza all'acqua - water fastness resistencia al agua - solidité à l'eau	3 ----> 4,5	4,5	4 ----> 4,5
altezza pezze - width - ancho - largeur	200/400 cm	200/400 cm	200/400 cm
classificazione al fuoco resistance against fire clasificación al fuego classement feu	Bfl-s1	Cfl-s1	Bfl-s1



# MARTINICA



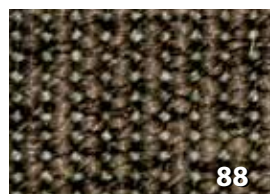
26



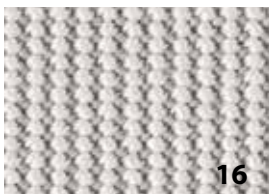
75



37



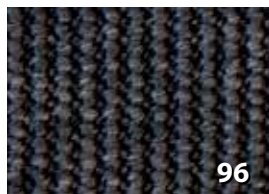
88



16



39



96

# GIAMAICA BARBADOS TOBAGO



34

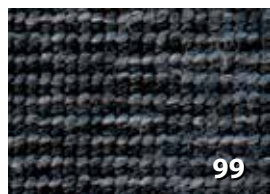
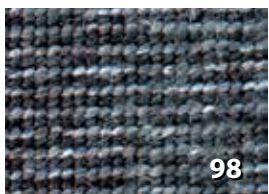
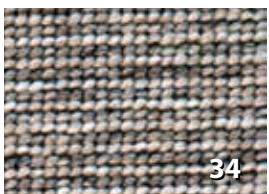


93

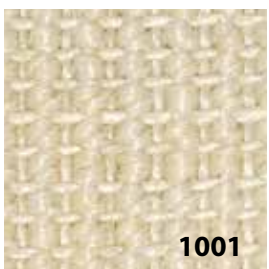


98

# SOHO



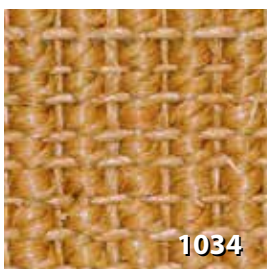
# CAYMAN



1001



1033



1034



1053



1061



1039



1046



1096



1009

*Ci riserviamo il diritto di apportare ai nostri prodotti, senza preavviso, ogni modifica necessaria  
Montecolino S.p.A. reserves to itself to make any variations  
Nous nous réservons le droit d'apporter à nos produits, sans préavis, toute modification nécessaire  
Nos reservamos el derecho de modificar nuestros productos, sin previo aviso*