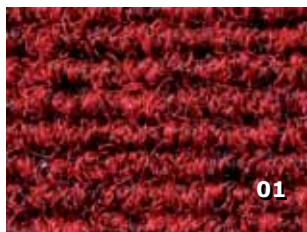


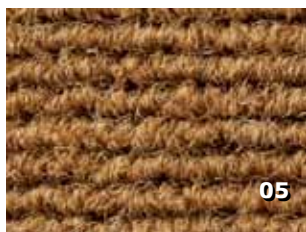
MASSIVE FLOOR COVERING



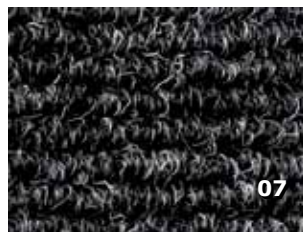
spessore fibra - pile thickness espesor pelo - épaisseur poil	7,5 mm
spessore totale - total thickness espesor total - épaisseur total	13,5 mm
tipo produzione manufacturing process método de fabricación méthode de fabrication	agugliato needlefelt punzonada aiguilleté
peso totale - total weight peso total - poids total	2.640 g/m2 +/-15%
composizione - composition composición - composition	100% PP outdoor
peso filato - pile weight peso pelo - poids poil	1.600 g/m2
fondo - backing soporte - dossier	schiuma gel gofrato - wafel backing espuma gel gofrado - mousse de gel gaufré
lunghezza rotoli size of the rolls medida piezas dimension des pièces	21 ml
altezza rotoli - width ancho - largeur	100/200 cm
destinazione use utilización utilisation	EN 685 classe d'uso:22+ traffico medio, ingressi, locali pubblici e abitazioni use class:22+ medium traffic, entrances, public buildings and houses clase de utilización:22+ medio tráfico, entradas, locales públicos y viviendas classe de utilisation:22+ trafic moyen, entrées, locaux publics et habitations



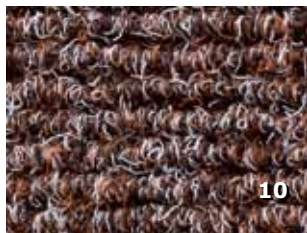
01



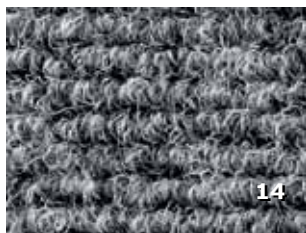
05



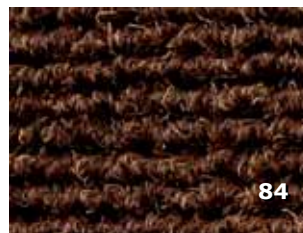
07



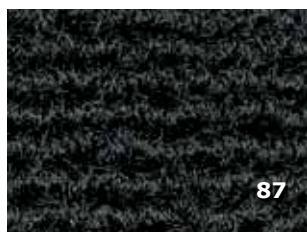
10



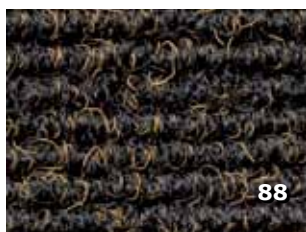
14



84



87



88